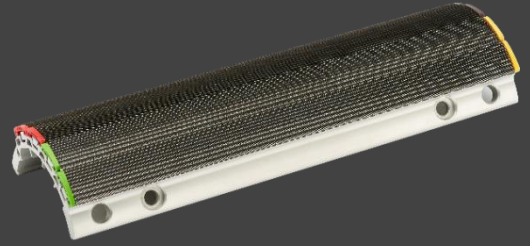
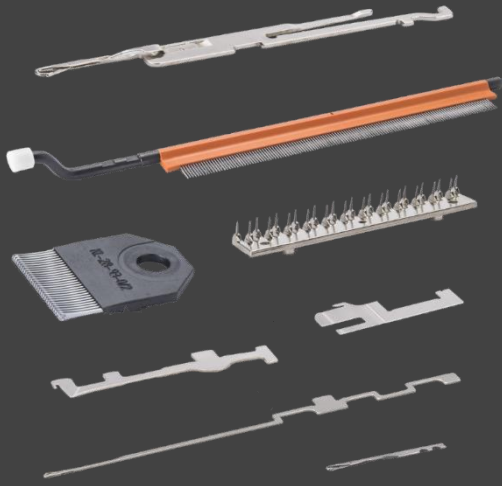


KERN-LIEBERS

TEXTILE

Circular comb



KERN-LIEBERS Textile has expanded its extensive product range to include circular combs.

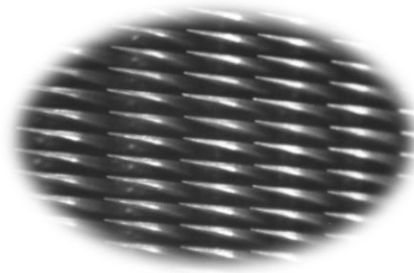
For decades now, KERN-LIEBERS Textile has been a competent and reliable partner for textile machine engineering. Its close relationship with mechanical engineering guarantees a consistently high level of quality, including for end customers in the spinning segment.

The product portfolio includes circular comb bars for combing machines produced by Rieter, Trützschler, Marzoli, Lakshmi and other leading machine manufacturers.

Circular combs from KERN-LIEBERS Textile are the ideal complement to the self-cleaning top comb (SAXTOP). The two products are perfectly matched to each other, offering the ideal combination of circular comb and top comb for combing machines.

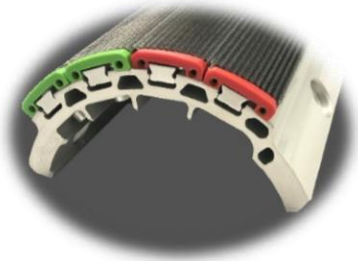
The ability to freely select from several segments with different tip density and tooth geometries means that the circular comb from KERN-LIEBERS Textile can be ideally configured to the cotton quality and to the required combing quality. The exact configuration of the teeth, the guarantee of tip densities, the special surface treatment of the teeth, and in particular the narrow tolerances of the tooth height over the entire comb, result in a careful treatment of the fibers and an extreme cleanliness of the combing silver.

The qualities that have contributed to the good image of KERN-LIEBERS Textile for decades were also the basis for the production of circular combs. Uncompromising high-end quality for the steadily growing demands of the textile markets worldwide.



Teeth with special surface treatment

Easy identification of the tooth density through color marking of the end pieces



The benefits:

- Absolute cleanliness of the combing sliver thanks to the exact configuration of the individual teeth
- Easy replacement of individual circular comb bars
- Careful treatment of the fibers due to the special surface treatment of the teeth

Product number	Teeth per cm ²	Colour		Number of teeth rows
CBM.05.25.025.320	25	Orange	Black	5
CBM.10.40.049.320	49	Yellow	Yellow	10
CBM.10.35.053.320	53	Grey	Yellow	10
CBM.10.30.058.320	58	Green	Yellow	10
CBM.10.25.062.320	62	Orange	Yellow	10
CBM.12.25.088.320	88	Orange	Brown	12
CBM.12.20.097.320	97	Red	Brown	12
CBM.15.25.110.320	110	Orange	Beige	15
CBM.15.20.125.320	125	Red	Beige	15
CBM.15.15.139.320	139	Blue	Beige	15
CBM.15.15.152.320	152	Blue	Grey	15